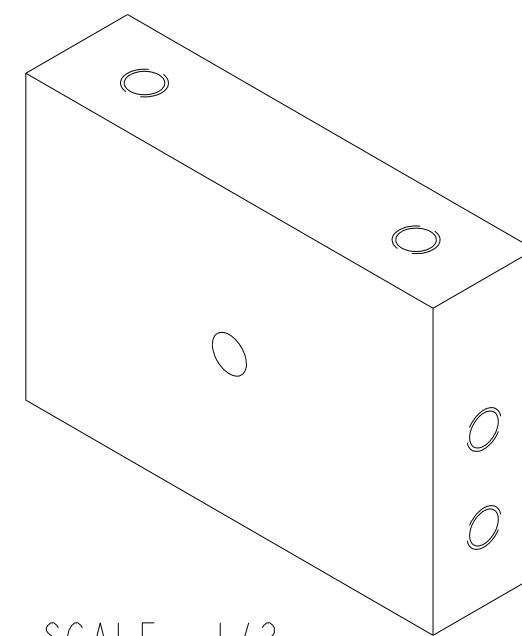
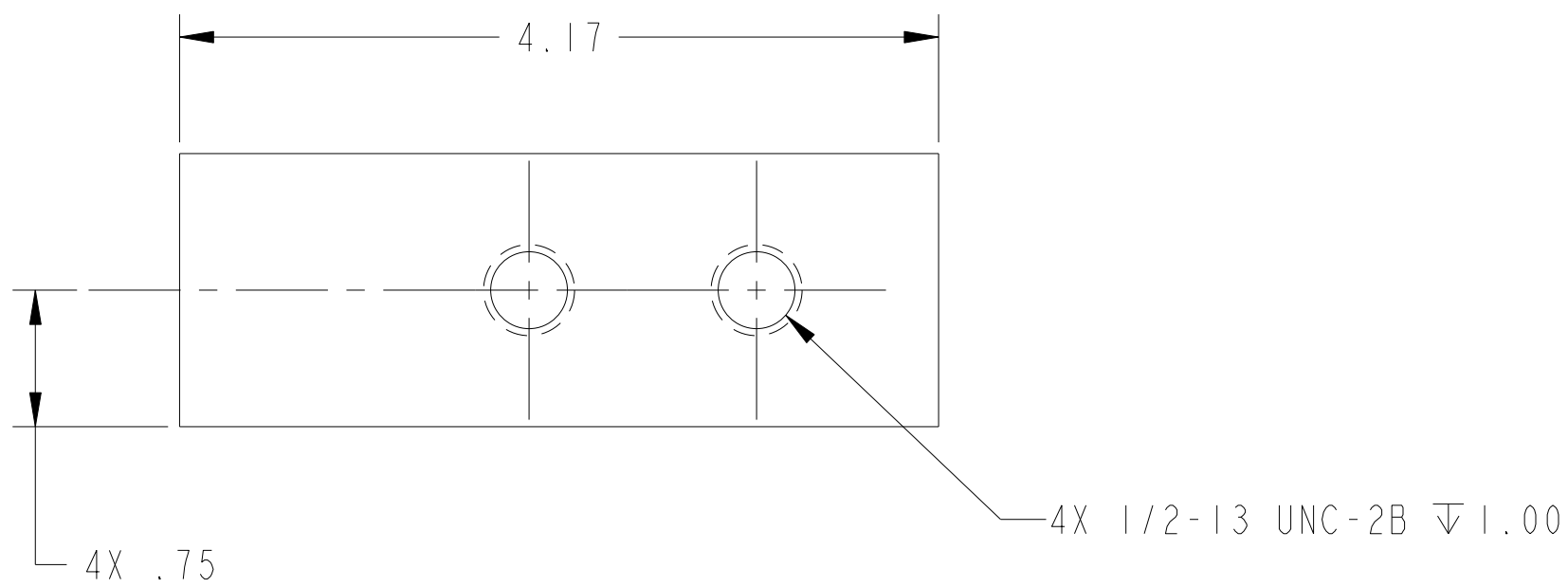
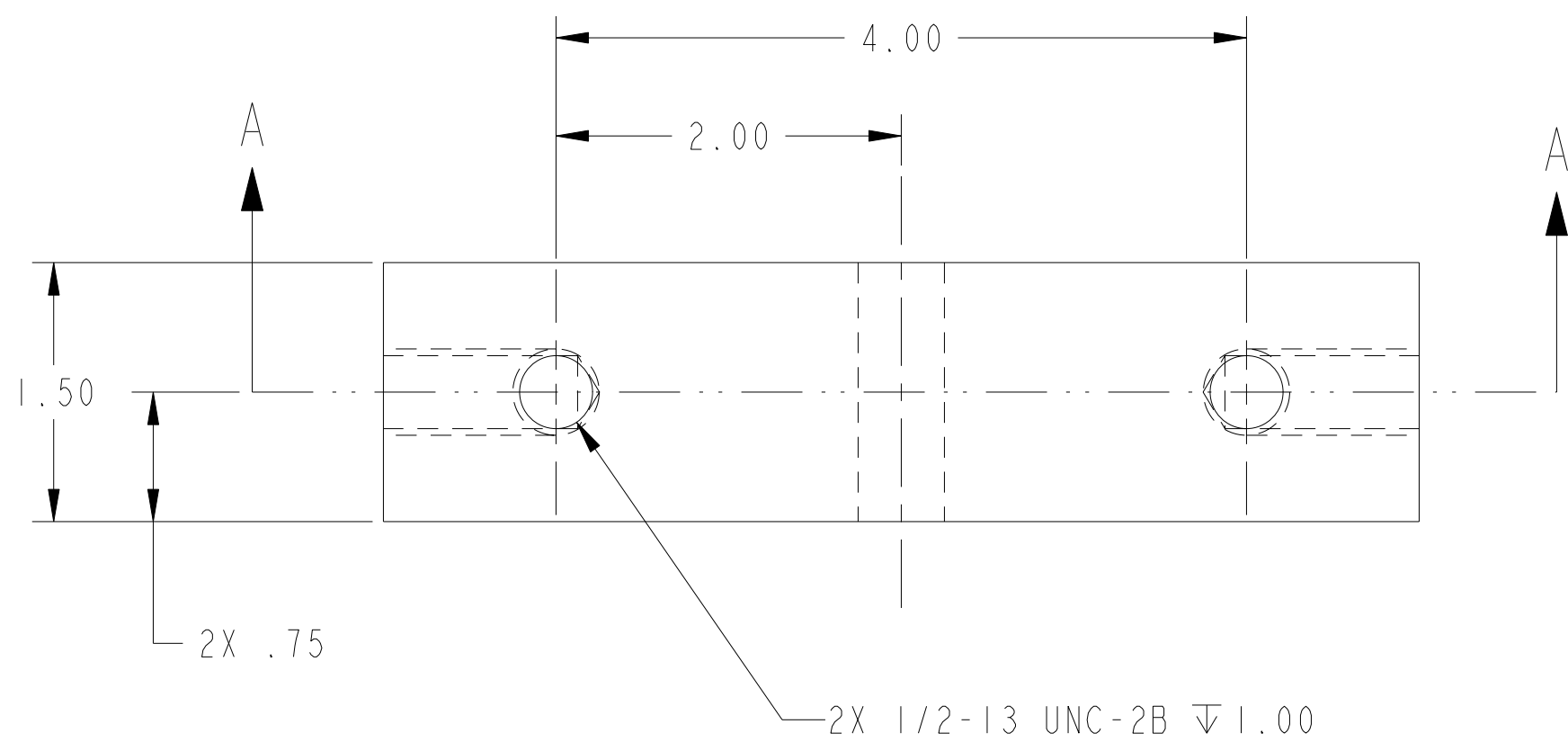
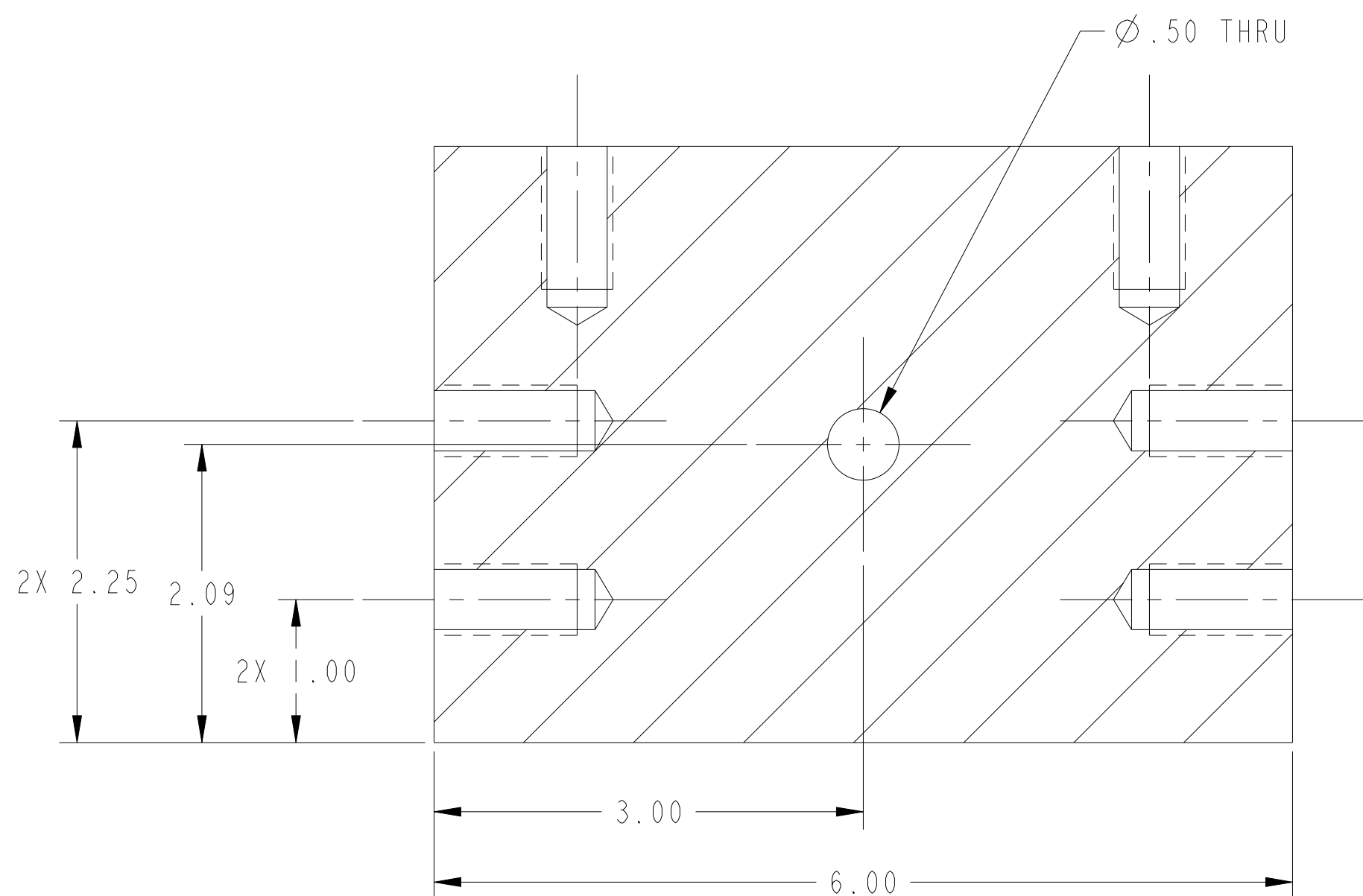


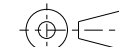
[illegible]



SCALE 1/2



SECTION A - A

ALUMINUM 6061 T6	ASTM B209	4 LBS
MATERIAL	SPECIFICATION	WEIGHT
PART INFORMATION		

QUALITY VERIFICATION		APPROVALS		
DOCUMENTS REQUIRED	APPLICABLE	DIMENSIONS ARE IN INCHES DRAFTING STANDARD: ASME Y14.100 DIMENSIONING AND TOLERANCING IN ACCORDANCE WITH ASME Y14.5M.2009 DO NOT SCALE DRAWING DEFAULT TOLERANCES LINEAR ANGULAR X.XX ±.01 ±.5° X.XXX ±.005 REMOVE ALL BURRS AND BREAK SHARP EDGES: .060 SURFACE ROUGHNESS: 125 RMS MAX THIRD ANGLE PROJECTION 	DESIGNER S ROY DATE 6/12/14 DETAILER S ROY DATE 6/12/14 CHECKER	
MATERIAL MILL TEST REPORT		ENGINEER	DATE	
LEAK TEST REPORT			TEAM LEAD	DATE
CLEANING CERT			GROUP LEAD	DATE
WELD / BRAZE INSPECTION REPORT			CHIEF ENGR	DATE
HEAT TREAT REPORT (W/CHART)			VERIFIER	DATE
DIMENSIONAL REPORT			CONTROL SYSTEM	RELEASE
MATERIAL SELLER CERT			SWS PROCEDURE 4 NFDD-ENG-001	
FUNCTIONAL TEST REPORT				
DEVIATION REQUEST	XX			
NONCONFORMANCE REPORT	XX			
QA REP	DATE			

	THIS DRAWING IS THE PROPERTY OF OAK RIDGE NATIONAL LABORATORY DEPARTMENT OF ENERGY UNDER U.S. GOVERNMENT CONTRACT DE-AC05-00OR22725 OAK RIDGE, TENNESSEE
	NEUTRON SCIENCES

FUND13N3HE10M8U8713A070
NEXT USED ASSEMBLIES