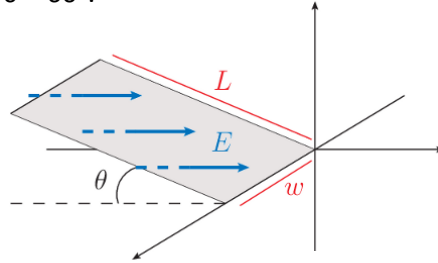


Name: _____

PHY 232 Summer 2016 Class Work

Class 4. Electric Flux

An electric field with magnitude $E_0 = 8 \text{ V/m}$ is passing through a leaning plane with length $L = 2 \text{ m}$ and width $w = 5 \text{ m}$. $\theta = 60^\circ$.



(a) Calculate the electric flux through the plane in Nm^2/C .

(b) At what angle of θ would the electric flux be maximized?

(c) At what angle of θ would the electric flux be 0?